

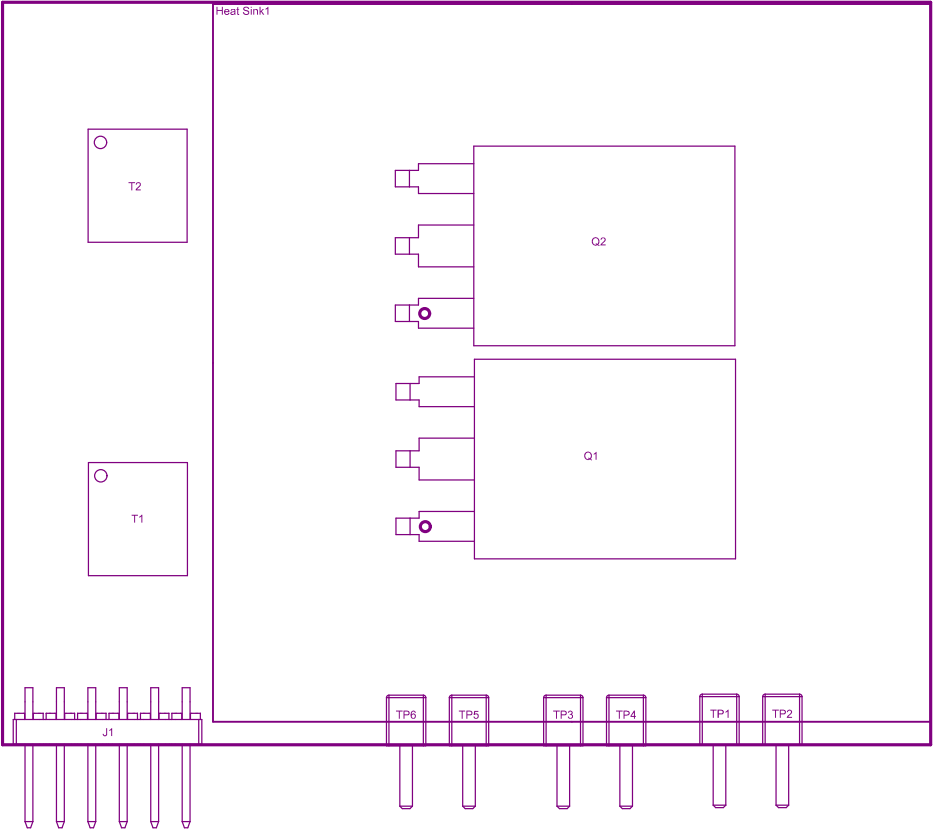
- ZZ1

Install label in silkscreened box after final wash. Text shall be 8 pt font. Text shall be per the Label Table in the PDF schematic.
- ZZ2

This Assembly Note will show in the PcbDoc and associated outputs
- ZZ3

This Assembly Note will show in the PcbDoc and associated outputs
- ZZ4

This Assembly Note will show in the PcbDoc and associated outputs

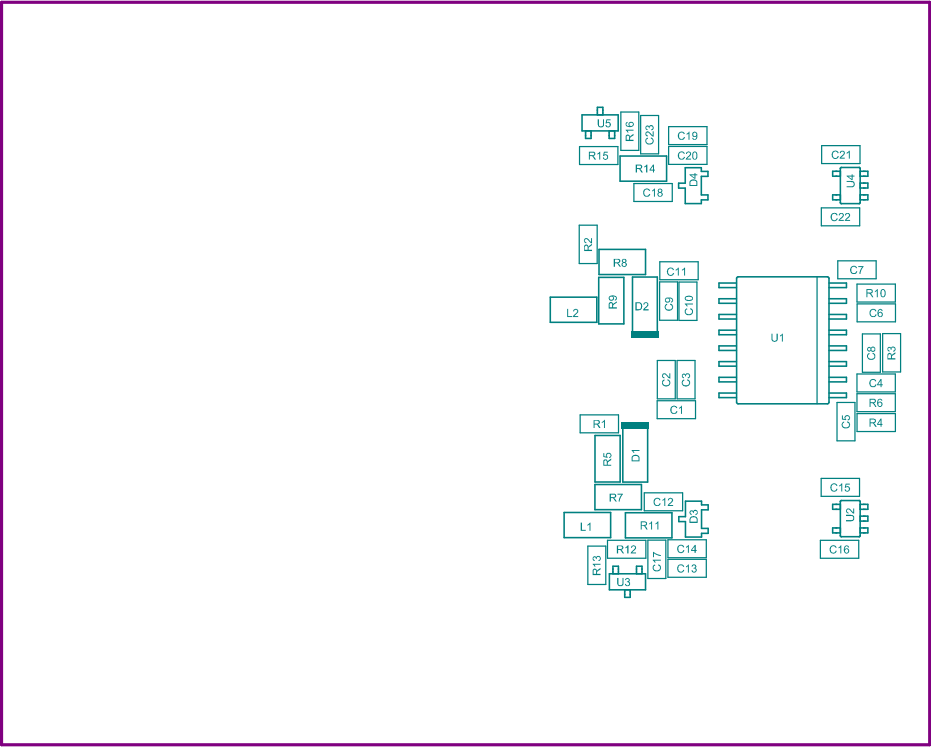


COMPONENTS MARKED 'DNP' SHOULD NOT BE POPULATED.

ASSEMBLY VARIANT:

001

PCB VIEWED FROM TOP SIDE	BOARD #: <div>TIDA-010210-S1</div>	REV: <div>E2</div>	SUN REV: <div>Not in version control</div>
LAYER NAME = <div>MS Assembly Top</div>	TID #: <div>TIDA-010210-S1</div>		
PLOT NAME = <div>Top Assembly Drawing</div>	GENERATED <div>3/18/2022</div> <div>9:38:03 AM</div>		TEXAS INSTRUMENTS



COMPONENTS MARKED "DNP" SHOULD NOT BE POPULATED.

ASSEMBLY VARIANTS

001

PCB VIEWED FROM BOTTOM SIDE	BOARD #:TIDA-010210-Si	REV: E2	SUN REV:Not in version control
LAYER NAME = M6 Assembly Bottom	TID #:TIDA-010210-Si		
PLOT NAME = Bottom Assembly Drawing	GENERATED :3/18/2022	9:38:06 AM	TEXAS INSTRUMENTS